

# *STERN* **WILLIAMS**

**ENGINEERED TERRAZZO  
MOP SINKS, SHOWER  
FLOORS, CABINETS &  
ACCESSORIES**



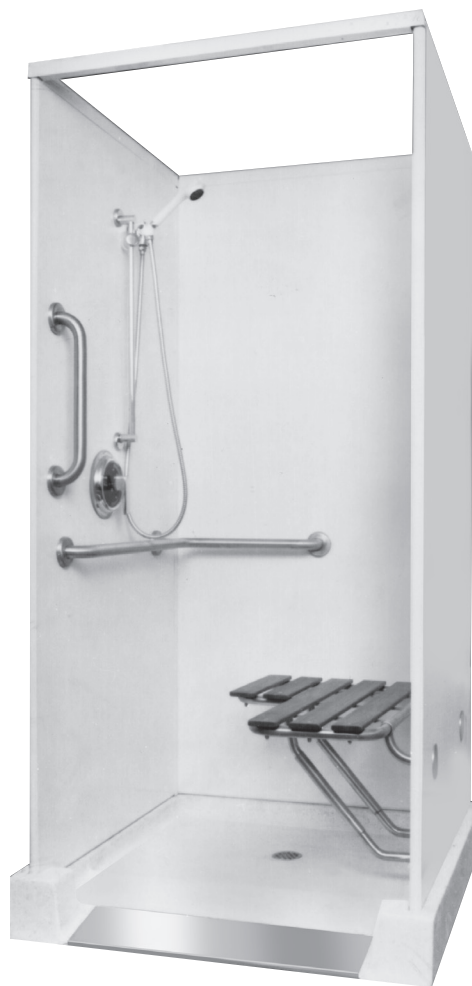
**MODEL SB-900**



**MODEL WDA-3660**



**MODEL HL-1800**



**MODEL HSC-143**

## Contents

Accessories . . . . .	12	Shower Cabinets . . . . .	3
Clinic Sink . . . . .	12	Shower Floors, Wheelchair accessible . . . . .	6-7
Service Sinks, Corner . . . . .	8	Shower Floors, Standard . . . . .	4-5
Service Sinks, Standard . . . . .	9-11		

## DESIGN ENGINEERING TO MEET EVERY NEED

### ABOUT STERN-WILLIAMS

Stern-Williams is a manufacturer of terrazzo service sinks, shower floors and cabinet packages. We opened for business in 1962, beginning only with a few terrazzo mop sink models, which we have gradually expanded to include one of the most complete lines of precast plumbing products. In addition, we specialize in building custom designs, and welcome the opportunity to be of service in this area.

### WILLIAMS CUSTOM ENGINEERING

For hospitals, elderly housing, apartment towers and dormitories.

Enjoy complete freedom of design...utilize expensive unused floor space when building design produces nonstandard configurations.

Custom floors not only meet your requirements and assure quality, but also provide substantial cost savings compared to on-sight construction.

You are invited to use our expertise in the planning stage, or send us your specifications for bidding.

Design options include integral thresholds, wide curbs for glass

enclosures, rustproof tiling flanges for ceramic tile, and cast rabbets to accept marble, slate or wall core paneling.

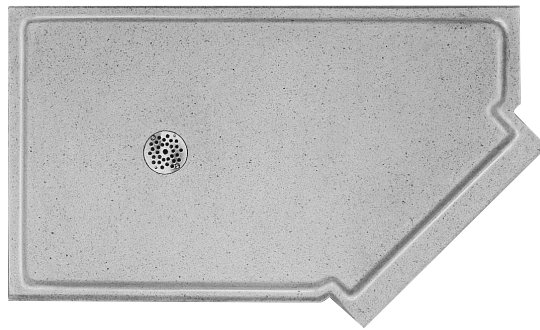
The one-piece molded floor has an integral cast brass drain with stainless steel strainer; vandal proof and offset drains are available for special applications.

Over the next several pages, we are pleased to introduce our line of terrazzo mop service basins. These are usually found in the janitor's closet, and may take many different shapes, depending on your need and space constraints.

### MATERIALS USED

**TERRAZZO** is a mixture of Portland cement and marble chips.

Stern-Williams uses only the finest materials. We use only white Portland cement so that we have absolute color control. We use #1 size marble chips. Standard color chip is white/black. Optional colors include white, tan or gray. Our castings contain Polyfiber mesh reinforcement to produce a minimum compressive strength of 3000 PSI.



### SPLASH CATCHER®

#### Stainless Steel Back Panels

Add Suffix "BP" to the model number of any Stern-Williams service sink. Protect wallboard against damage and deterioration. The 12" high panels channel water into the basin, cover the face and lower edges of the wallboard, and protect against worker carelessness. Panel material is type 304, 20-gauge Stainless Steel.

1. Channel water into the mop sink, protecting the face of the wallboard against splashing, and protecting the raw lower edge against seepage.
2. Cover and protect the seam-taped corners, preventing loosening and curling of seam tape.
3. Protect wallboard against the impact of equipment and the carelessness of maintenance workers.



SBC-1700-BP-2



### **SINGLE-SOURCE**

**Convenience and dependability:  
Williams Shower Cabinets with  
Terrazzo Floors**

Free standing shower cabinet packages for single or multiple unit installations. Wall finishes available for any requirement.

#### **Metallic:**

- **Powder Coated –**  
Double-wall construction. The economical and durable choice.

- **Stainless Steel –** Type 304 polished to a #4 finish for the ultimate in beauty and longevity. Dirt, grease and cosmetics can be easily removed.

#### **Non Metallic:**

- **High Density Polymer (H.D.P.)**  
The color is solid throughout. Can be used under any moisture condition.
- **Solid Phenolic Core (S.P.C.) –** Highly resistant to stains and scratches while impervious to steam, soaps, detergents and it will not mildew.

### **STANDARD MODELS**

**SC-32.** Front entry. 32 x 32 x 82"

**SC-36.** Front entry. 36 x 36 x 82"

**SC-38.** Double entry. 36 x 36 x 82"

**SC-39.** Double entry corner type.  
36 x 36 x 82"

**SC-40.** Neo-corner. 40 x 40 x 82"

**NOTE:** Specify R or L hand drilling.

Includes Terrazzo shower floor with 6" side walls, integrated cast 2" brass drain with removable stainless steel strainer. Pressure balance valve and head

**SC-140,** soap dish, heavy duty white curtain and rod.

#### **Options:**

Top only **SC-TC**

Top and dome light **SC-TCLF**

Corner filler strip **SC-7**

Joint filler strip **SC-JFS**

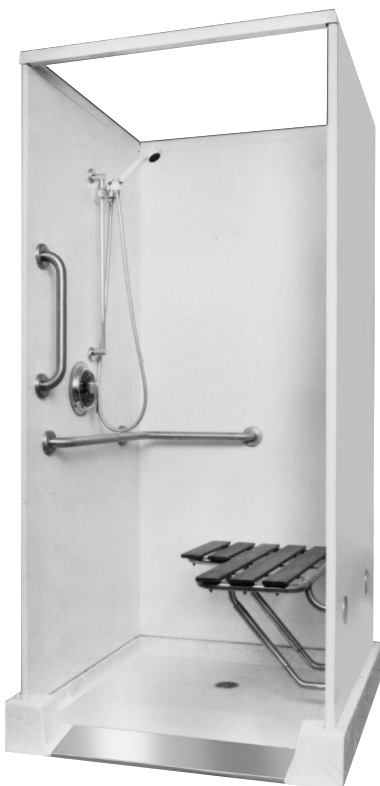
Filler block **-FB\***

Thermostatic valve **SC-140-TCV**

Attached dressing compartment **-DC\***

Shower door **SC-36/TDG**

*\*Layout sketch required*



### **PHYSICALLY CHALLENGED MODELS**



#### **Roll-In-Type**

**HSC-400** (1) Roll-In-type 40x40x82"\*

**HSC-430** (2) Roll-In-type 65x33x82"\*

**HSC-460** (2) Roll-In-type 65x39x82"\*

#### **Transfer-Type**

**HSC-143** (1) Transfer-Type 40x40x82"\*

**HSC-145** (1) Transfer-Type 40x48x82"

**HSC-630** (2) Transfer-Type 65x33x82"\*

**HSC-660** (2) Transfer-Type 65x39x82"\*

**NOTE:** (1) Specify R or L hand valve drilling.

(2) Back drilling standard; Specify R or L hand seat.

**\*ADA compliant (see page 7)**

**We suggest a floor drain at the entrance to the transfer type.**

Includes a ramp or roll in type Terrazzo shower floor. Pressure balance valve with separate stops. **SC-140-SS** Hand held shower combination with swivel fitting, 69" flexible C.P. brass hose and in-line vacuum breaker. Retractable wood grain phenolic shower seat. Horizontal and vertical stainless steel grab bars with concealed mounting. Heavy duty white curtain and rod.

#### **Options:**

Top only **HSC-TC**

Top and dome light **HSC-TCLF**

Filler strip **SC-6** (front), **SC-7** (back)

Joint filler strip **SC-JFS\***

Filler block **-FB\***

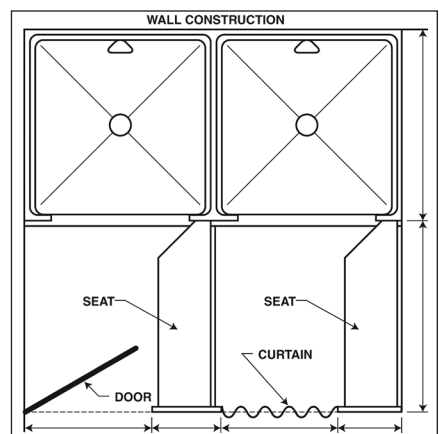
Thermostatic valve **SC-140-TCVH**

Attached dressing compartment **-DC\***

Collapsible water dam - **RDM**

(see page 7)

**\*Layout sketch required**

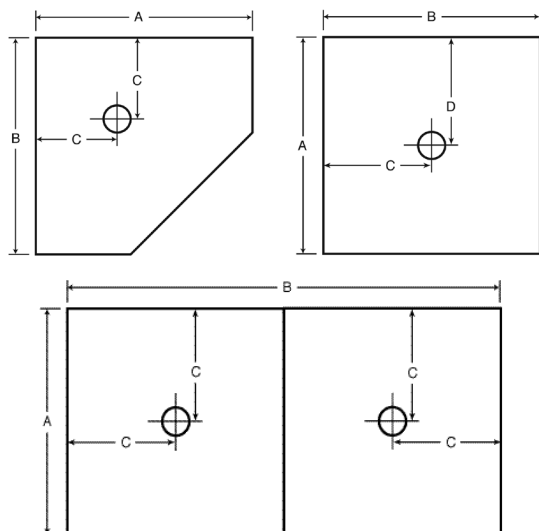


Shower Cabinets with attached dressing compartments with seats, curtains or doors.



**SERPENTINE**
**Institutional Shower Floor**

High 6" side wall. Specify plain shoulders (i.e.: #34) for installation flush against room wall. Specify tiling flanges for tile wall construction (i.e.: #34-FFF three tiling flanges) or cast rabbets (i.e.: #34-R provide rabbet configuration) to hold precut, drop-in panels of partitioning material.


**SERPENTINE INSTITUTIONAL**

MODEL	SIZE	A	B	C	D
34	36x36	36	36	18	18
34-BO	36x36	36	36	18*	—
34-NC	36x36	36	36	12	—
36-D	36x72	36	72	36	18
36-DD	36x72	36	72	18	—

\*Drain is centered on back dimension.



34-NC Neo-Corner



34 Single Drain with Rabbets



36-DD Double Drain

**SUSSEX**
**Shower Floors Flanged All Sides**

-For threshold to be built on the job-

- Terrazzo's natural non-slip surface provides better footing and increased safety.
- Choice of colors: black and white (standard); optional: white, tan or gray.
- Terrazzo composed of marble chips cast in white Portland cement to produce a compressive strength of 3000 PSI seven days after casting. Then ground smooth, grouted and sealed to resist stains and moisture.
- Integral cast 2" brass drain with removable stainless steel strainer plate. Options: **-PB** Polished Brass Strainer, **TC-2** Drain Gasket, **-VP** Vandal Proof Drain.
- Installs on the finished floor.

**NEO-CORNER**

Meets all standard requirements for built-up construction using tile or other wall treatments. Neo-corner provides a roomy shower while conserving floor space.

**SQUARE OR RECTANGULAR**

Choose square or rectangular models for recessed installations. Rectangular model produces the largest area for showering. Square unit is available in three sizes for flexibility in design.

**SUSSEX NEO-CORNER**

-All sides flanged-

MODEL	SIZE	A	B	C	D	E
14	36x36	36	36	12	17	27
16	40x40	40	40	12	20	28 1/4

**SUSSEX SQUARE**

-All sides flanged-

MODEL	SIZE	A	B	C	D
22	32x32	32	32	16	—
24	36x36	36	36	18	—
26	40x40	40	40	20	—

**SUSSEX RECTANGULAR**

-All sides flanged-

MODEL	SIZE	A	B	C	D
32	48x32	48	32	24	16



14 Sussex Neo Corner



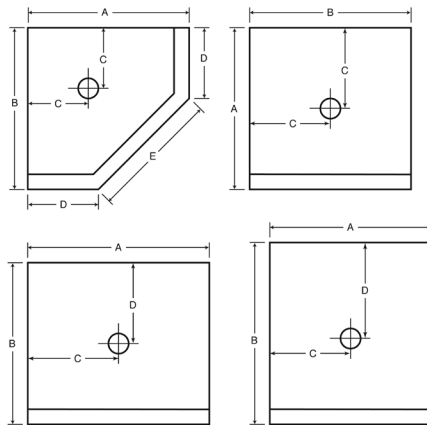
24 Sussex Square



32 Sussex Rectangular


**43 Trieste Neo Corner**

**54 Trieste Square**

**88 Trieste Rectangular**


### TRIESTE

#### *Shower Floors W/Wide Integral Threshold*

-Easily accommodates glass or plastic doors-

Wide integral cast Terrazzo threshold forms a perfect base for glass or plastic enclosure and saves the cost of a tiled threshold.

For details on Terrazzo, drain, options and installation, see page 4

### NEO-CORNER

The two wall sides of this space-saving shower floor are flanged for built-up construction on the job. Threshold on three sides for use with popular glass or plastic doors.

### SQUARE

Choice of styles for greater design flexibility. For a room-corner shower, specify model with two sides flanged and threshold on two sides. For recessed installation, specify model with three sides flanged and threshold on one side.

### RECTANGULAR

Our most popular series. Three sides are flanged for built-up construction. Model with threshold on long dimension is available in twelve sizes. Model with threshold on short dimension is designed especially for retro-fit situations.

### TRIESTE NEO-CORNER

-With wide integral threshold -

MODEL	SIZE	A	B	C	D	E
42	32x32	32	32	12	14	25 <sup>3</sup> / <sub>8</sub>
43	34x34	34	34	12	17	24 <sup>1</sup> / <sub>8</sub>
44	36x36	36	36	12	17	27
45	38x38	38	38	12	19	26 <sup>7</sup> / <sub>8</sub>
46	40x40	40	40	12	20	28 <sup>1</sup> / <sub>4</sub>

### TRIESTE SQUARE

- Threshold on one side -

MODEL	SIZE	A	B	C
50	30x30	30	30	15
52	32x32	32	32	16
53	34x34	34	34	17
54	36x36	36	36	18
56	40x40	40	40	20
57	42x42	42	42	21
58	48x48	48	48	24

### TRIESTE SQUARE

-Threshold on two adjacent sides-

MODEL	SIZE	A	B	C
62	32x32	32	32	16
64	36x36	36	36	18
66	40x40	40	40	20

### TRIESTE RECTANGULAR

-Threshold on long dimension-

MODEL	SIZE	A	B	C	D
82	36x32	36	32	18	16
83	42x32	42	32	21	16
83.2	42x34	42	34	21	17
83.5	42x36	42	36	21	18
84	48x32	48	32	24	16
84.2	48x34	48	34	24	17
84.5	48x36	48	36	24	18
86	54x32	54	32	27	16
88	60x32	60	32	30	16
88.2	60x34	60	34	30	17
88.3	60x30	60	30	30	15
88.5	60x36	60	36	30	18

### TRIESTE RECTANGULAR

-Threshold on short dimension -

MODEL	SIZE	A	B	C	D
92	32x36	32	36	16	18
94	36x42	36	42	18	21
94.5	36x48	36	48	18	24


**54-BO Trieste Back Outlet**

### Back Outlet Shower Floors

-For off-the-floor roughing-

When structural consideration demands, this floor allows drain to be put directly into pipe chase. Provides freedom of design.

*Note: Back outlet and side outlet drains are available on other Sussex and Trieste shower floors.*

### SUSSEX BACK OUTLET\*

-All sides flanged-

MODEL	SIZE	A	B
24-BO	36x36	36	36

### TRIESTE BACK OUTLET\*

-Threshold on one side-

MODEL	SIZE	A	B
52-BO	32x32	32	32
54-BO	36x36	36	36

*\*Drain is centered on back dimension, 2" F.I.P.S. outlet.*

## PARIAN

### PARIAN RAMP AND ROLL-IN MODEL

The transfer type allows a wheelchair patient to roll up to the shower unit and to transfer onto a seat with the assistance of a grab bar. The roll in type allows the wheelchair patient to roll completely into the unit while seated. This unit must be recessed into the building floor to allow unobstructed entry. The 60x30" size is ideal for spaces formerly occupied by a standard bathtub.

## SERPENTINE WHEELCHAIR MODEL

### -With Stainless Steel Cap-

Attractive, 20 gauge cast in stainless steel cap covers and brightens the leading 6" of the 12" integral ramp. A cast in water dam is standard to help reduce water run off. A floor drain by others at the entrance to the sloped threshold and a collapsible water dam (Option: -RDM see below) are recommended for added protection.

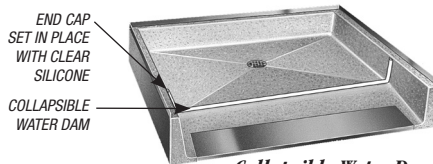
### SERPENTINE ROLL-IN MODEL

Lower threshold makes it easier for the wheelchair and geriatric patients to enter. Threshold is just 2-1/2" high and must be recessed into the building floor to allow unobstructed wheelchair entry. A removable aluminum ramp (Option: -RRP below) is available where recessing is not feasible.

## SERPENTINE SHOWER FLOOR ROLL-IN MODEL

-Three sides flanged\*-

MODEL	SIZE	A	B	C	D
WH-2200	36x36	36	36	18	18
WH-2500	42x42	42	42	21	21
WH-2600	48x36	48	36	18	24
WH-2700	48x48	48	48	24	24
WH-2900	60x34	60	34	17	30
WH-3000	46x52	46	52	8	23



Collapsible Water Dam

Optional: -RDM Collapsible Water Dam  
(HC, WDA, WS Series)

## PARIAN TRANSFER SHOWER FLOOR WITH RAMP

-Three sides flanged\*-

MODEL	SIZE	A	B	C	D	E	F
WDA-3600	39x39	39	39	12	19½	27	12
WDA-3610	60x30	60	30	12	30	18	12
WDA-3620	60x36	60	36	12	30	24	12

## PARIAN ROLL-IN TYPE SHOWER FLOOR

-Three sides flanged\*-

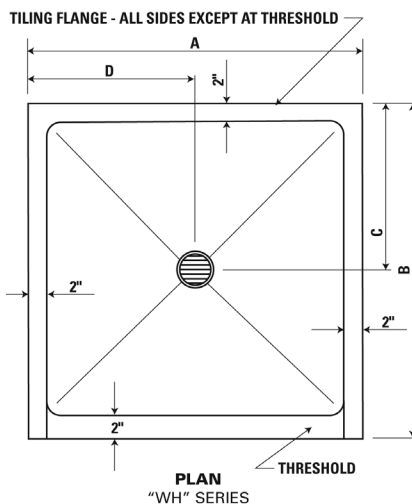
MODEL	SIZE	A	B	C	D
WDA-3400	39x39	39	39	19½	19½
WDA-3410	60x30	60	30	15	30
WDA-3420	60x36	60	36	18	30

\*Note: Flanges are intended to be used with wall tile applied by others to conform with Federal, state and local shower stall dimensions. Floors can be supplied less flanges (-LF).

## SERPENTINE WHEELCHAIR SHOWER FLOOR WITH STAINLESS STEEL CAP

-Three sides flanged\*-

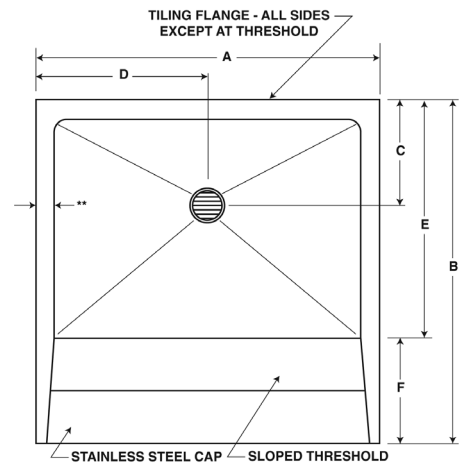
MODEL	SIZE	A	B	C	D	E	F
WS-3200	36x36	36	36	12	18	24	12
WS-3500	48x48	48	48	18	24	36	12
WS-3501	60x48	60	48	18	30	36	12
WS-3502	60x60	60	60	24	30	48	12
WS-3503	42x70	42	70	9	21	58	12
WS-3504	48x70	48	70	9	24	58	12
WS-3505	60x70	60	70	9	30	58	12



PLAN  
"WH" SERIES



WDA - 3620 Parian Transfer



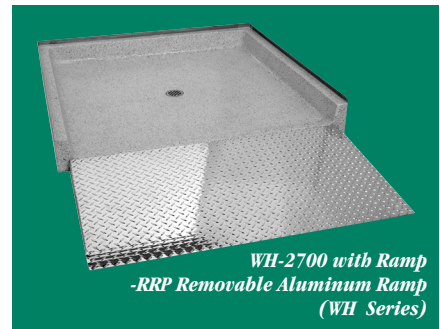
PLAN  
"WS" SERIES W/ 3" CURB\*\*  
"WDA" SERIES W/ 1-1/2" CURB\*\*



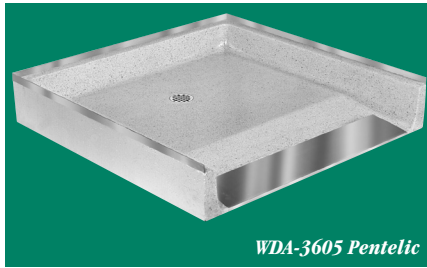
WS-3200 Serpentine Wheelchair



WH-2200 Serpentine



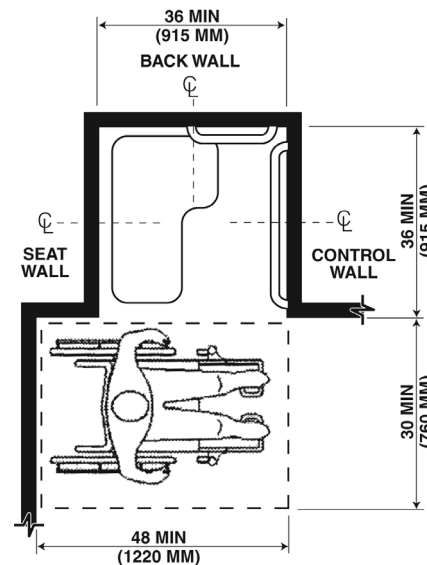
WH-2700 with Ramp  
-RRP Removable Aluminum Ramp  
(WH Series)



WDA-3605 Pentelic



WDA-3430 Pentelic



### 608.2.1 Transfer Type Shower

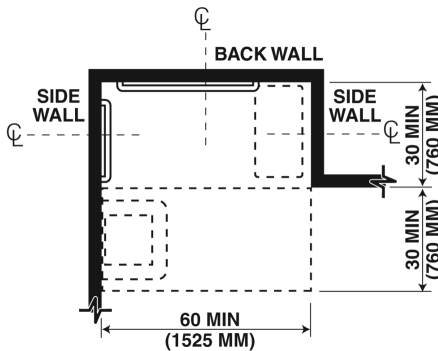
**Compartments.** Transfer type shower compartments shall be 36 inches (915 mm) by 36 inches (915 mm) clear inside dimensions measured at the center points of opposing sides and shall have a 36 inch (915 mm) wide minimum entry on the face of the shower compartment. Clearance of 36 inches (915 mm) wide minimum by 48 inches (1220 mm) long minimum measured from the control wall shall be provided.

### PENTELIC PENTELIC TRANSFER TYPE SHOWER FLOOR WITH RAMP

The intent is to allow a wheelchair patient to lift one's self onto a transfer seat with the assistance of a grab bar. This transfer type shower floor has an integral cast 1:12 running sloped ramp with a stainless steel cap that protects the leading 6". The 40x38" provides an inside clear access of 36x36". This style floor was designed to be set 1/4" deep from the top of the finished floor. A floor drain by others at the entrance to the sloped threshold and a collapsible water dam (Option: -RDM, see page 6) are recommended for added protection.

### PENTELIC ROLL-IN TYPE SHOWER FLOOR WITHOUT RAMP

The intent is to allow a wheelchair patient to remain seated in the wheelchair and roll into the shower. This model must be recessed into the building floor to allow unobstructed wheelchair entry.



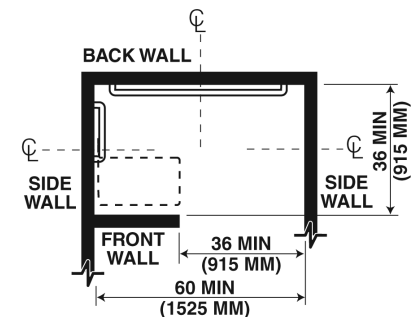
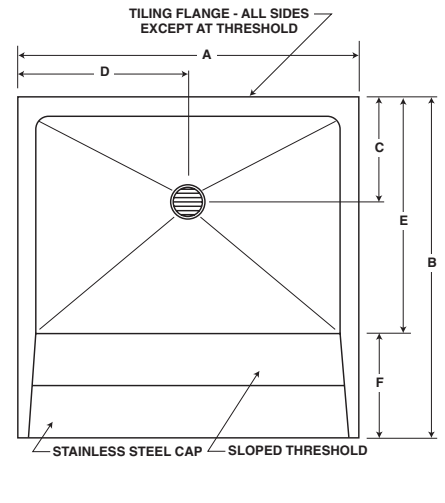
**608.2.2 Standard Roll-In Type Shower Compartments.** Standard roll-in type shower compartments shall be 30 inches (760 mm) wide minimum by 60 inches (1525 mm) deep minimum clear inside dimensions measured at center points of opposing sides and shall have a 60 inches (1525 mm) wide minimum entry on the face of the shower compartment.

### PENTELIC TRANSFER SHOWER FLOOR WITH RAMP -Three sides flanged\*-

MODEL	SIZE	A	B	C	D	E	F
WDA-3605	40x38	40	38	12	20	26	12
WDA-3630	64x32	64	32	12	32	20	12
WDA-3660	64x38	64	38	12	32	26	12

### PENTELIC ROLL-IN TYPE SHOWER FLOOR -Three sides flanged\*-

MODEL	SIZE	A	B	C	D
WDA-3405	40x38	40	38	19	20
WDA-3430	64x32	64	32	16	32
WDA-3460	64x38	64	38	19	32



**608.2.3 Alternate Roll-In Type Shower Compartments.** Alternate roll-in type shower compartments shall be 36 inches (915 mm) wide and 60 inches (1525 mm) deep minimum clear inside dimensions measured at center points of opposing sides. A 36 inch (915 mm) wide minimum entry shall be provided at one end of the long side of the compartment.



**CORNARO, CORLOW & CRESCENT**
**12" CORNER SERVICE SINKS**

- Terrazzo composed of pearl gray marble chips cast in white Portland cement which produces a compressive strength of 3000 PSI seven days after casting; then ground smooth, grouted and sealed to resist stains and moisture.
- Integral cast cap in one-piece 20 gauge stainless steel.
- Drain is cast brass with stainless steel strainer, cast integral, and provides for a caulked connection of not less than 1" deep to a 3" pipe.
- Installs on the finished floor.

**CORNARO®**
**-Saves floor space-**

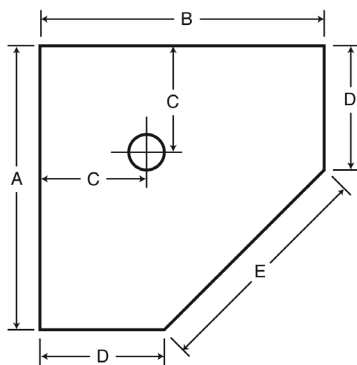
Trend-setting corner model occupies less space than square or rectangular basins. Integral cast one-piece stainless steel cap prevents chipping and damage. Versatility and permanent fresh appearance make it a popular choice.

**CORLOW®**
**-Functional 6" front drop-**

Another Williams first. This efficient design facilitates dumping of power maintenance equipment and reduces lifting of conventional cleaning equipment. Integral cast stainless steel cap protects the threshold.

**CRESCENT**
**-The service sink with style-**

Unique radial design, for extraordinary buildings. Provides more open space in the maintenance closet, reduces interference with door swing. 6" front drop with integral cast stainless steel cap on the threshold.


**CORNARO**  
 -With Plain Shoulders -

MODEL	SIZE	A	B	C	D	E
SBC-1400	24x24x12	24	24	12	15	12½
SBC-1402*	24x24x12	24	24	12	15	12½
SBC-1425	32x32x12	32	32	12	23¼	12¼
SBC-1450	36x36x12	36	36	12	26	13¾

\*With two tiling flanges

**CORNARO**
**-With Industry's Finest Stainless Steel Cap-**

MODEL	SIZE	A	B	C	D	E
SBC-1500	24x24x12	24	24	12	15	12½
SBC-1502*	24x24x12	24	24	12	15	12½
SBC-1525	32x32x12	32	32	12	23¼	12¼
SBC-1550	36x36x12	36	36	12	26	13¾

\*With two tiling flanges

**CORLOW**
**- 6" Front Drop with Stainless Steel Cap-**

MODEL	SIZE	A	B	C	D	E
SBC-1700	24x24x12	24	24	12	15	12½
SBC-1702*	24x24x12	24	24	12	15	12½
SBC-1725	32x32x12	32	32	12	23¼	12¼
SBC-1750	36x36x12	36	36	12	26	13½

\*With two tiling flanges

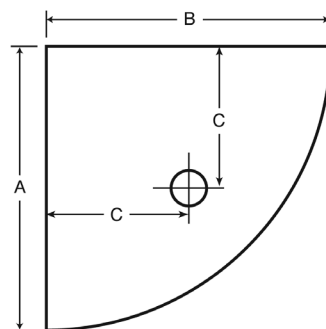
**CRESCENT**
**- 6" Front Drop with Stainless Steel Cap-**

MODEL	SIZE	A	B	C
CRS-2200	28x28x12	28	28	12
CRS-2202*	28x28x12	28	28	12

\*With two tiling flanges

**CRESCENT**
**- 6" Front Drop without Stainless Steel Cap -**

MODEL	SIZE	A	B	C
CRS-2210	28x28x12	28	28	12



SBC-1500 Cornaro Corner



SBC-1700 Corlow Corner



CRS-2200 Crescent Corner

**QUALITY ACCESSORIES**

**T-10-VB** Sink fitting with integral stops, lever handles and spring checks.

Spout with bucket hook, 3/4" hose thread end. Vacuum breaker; adjustable top brace. Inlets 8" on centers. Chrome finish.

**T-15-VB** Sink fitting, the same as T-10-VB with Polished Chrome finish.

**T-35** Hose and wall bracket. 36" hose with 3/4" chrome coupling. Type 302 stainless steel bracket with spring loaded rubber grip.

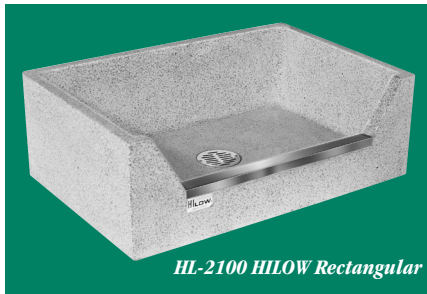
**T-40** Stainless steel mop hanger, #4 finish. 24" length with 3 spring loaded rubber grips.

**C-10** Silaprene Sealant, to close wall seams on receptors without flanges.

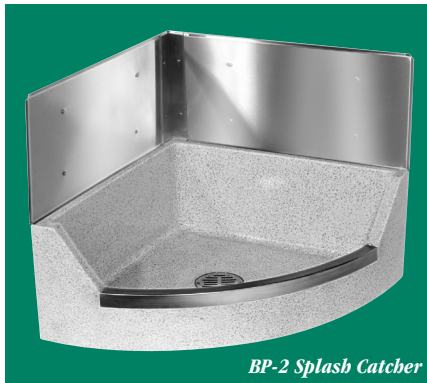




HL-1800 HILOW Square



HL-2100 HILOW Rectangular



BP-2 Splash Catcher

### HILOW®

#### SQUARE OR RECTANGULAR

Williams extends the convenience of its front drop design to square and rectangular models. Ideal for installations when building design and layout provide more space in the maintenance closet. Efficient design facilitates the dumping of power maintenance equipment and reduces the lifting of conventional equipment. Stainless steel cap protects the threshold.

- Terrazzo composed of pearl gray marble chips cast in white Portland cement which produces a compressive strength of 3000 PSI seven days after casting; then ground smooth, grouted and sealed to resist stains and moisture.
- Integral cast cap in one-piece 20 gauge stainless steel.
- Drain is cast brass with stainless steel strainer, cast integral, and provides for a caulked connection of not less than 1" deep to a 3" pipe.
- Installs on the finished floor.

### 12" HILOW TERRAZZO

#### SERVICE SINKS HILOW SQUARE

- With Stainless Steel Cap -

MODEL	SIZE	A	B	C	D
HL-1800	24x24x12	24	24	12	-
HL-1900	32x32x12	32	32	16	-
HL-2000	36x36x12	36	36	18	-

- With Stainless Steel Caps All Sides -

MODEL	SIZE	A	B	C	D
HL-1810	24x24x12	24	24	12	-
HL-1910	32x32x12	32	32	16	-
HL-2010	36x36x12	36	36	18	-

### 12" HILOW TERRAZZO

#### SERVICE SINKS HILOW RECTANGULAR

-With Stainless Steel Cap-

MODEL	SIZE	A	B	C	D
HL-2100	36x24x12	24	36	12	18

-With Stainless Steel Caps All Sides-

MODEL	SIZE	A	B	C	D
HL-2110	36x24x12	24	36	12	18

### SPLASH CATCHER®

#### Stainless Steel Back Panels

Add Suffix "BP" to the model number of any Stern-Williams service sink. Protect wallboard against damage and deterioration. The 12" high panels channel water

into the basin, cover the face and lower edges of the wallboard, and protect against worker carelessness. Type 304, 20-gauge stainless steel. Shown: Crescent service sink, CRS-2200-BP-2

### QUALITY ACCESSORIES

(continued)

#### Mop Sink Drain Gaskets

**TC-3** -3" For XHCl, plastic and steel pipe.

**TC-3-NH** -3" For SV and NHCl pipe.

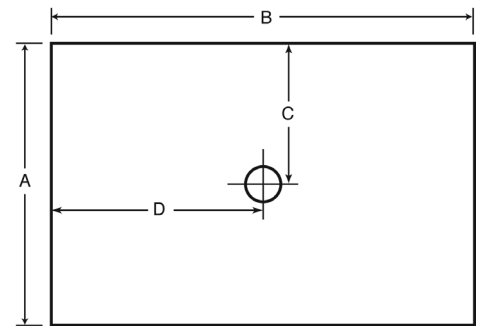
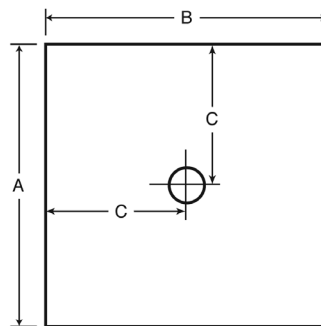
**TC-3-2** - 3" Reducer with 2" hole.

#### Options:

**-EC** Chemical Resistant Epoxy Coating

**-LB** Lint Basket

**-VP** Vandal Proof Strainer Plate



**SERVICEPTOR®**
**SQUARE OR RECTANGULAR**

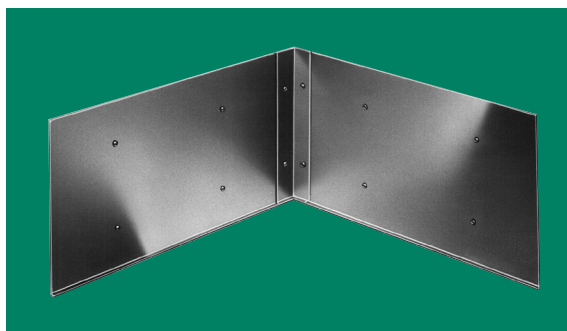
- Terrazzo composed of pearl gray marble chips cast in white Portland cement which produces a compressive strength of 3000 PSI seven days after casting; then ground smooth, grouted and sealed to resist stains and moisture.
- Drain is cast brass with stainless steel strainer, cast integral, and provides for a caulked connection of not less than 1" deep to a 3" pipe.
- Installs on the finished floor.

The most complete line of Terrazzo Serviceptors for corner, recessed, pier or island installations. Square models in choices of three sizes. All models available with plain shoulders or integral cast 20 gauge stainless steel cap(s).

**12" SERVICEPTOR  
TERRAZZO SERVICE SINKS**

- With One-Piece Stainless Steel Cap -

MODEL	SIZE	TILING	A	B	C	D
FLANGES						
SB-900		0				
SB-901	24x24x12	1	24	24	12	-
SB-902		2				
SB-903		3				
SB-700		0				
SB-701	32x32x12	1	32	32	16	-
SB-702		2				
SB-703		3				
SB-500		0				
SB-501	36x36x12	1	36	36	18	-
SB-502		2				
SB-503		3				
SB-300		0				
SB-301	36x24x12	1	24	36	12	18
SB-302-L*		2				
SB-302-R*		2				
SB-303		3				


**12" SERVICEPTOR  
TERRAZZO SERVICE SINKS**

- With Plain Shoulders -

MODEL	SIZE	TILING	A	B	C	D
FLANGES						
SB-800		0				
SB-801	24x24x12	1	24	24	12	-
SB-802		2				
SB-803		3				
SB-600		0				
SB-601	32x32x12	1	32	32	16	-
SB-602		2				
SB-603		3				
SB-400		0				
SB-401	36x36x12	1	36	36	18	-
SB-402		2				
SB-403		3				
SB-200		0				
SB-201	36x24x12	1	24	36	12	18
SB-202-L*		2				
SB-202-R*		2				
SB-203		3				

\*Flange is across back and on left side on model numbers ending in "L".

\*Flange is across back and on right side on model numbers ending in "R".

**12" SERVICEPTOR  
TERRAZZO SERVICE SINKS**

- With Four Stainless Steel Caps-

MODEL	SIZE	TILING	A	B	C	D
FLANGES						
SB-850	24x24x12	0	24	24	12	-
SB-650	32x32x12	0	32	32	16	-
SB-450	36x36x12	0	36	36	18	-
SB-250	36x24x12	0	24	36	12	18

**SPLASH CATCHER®**
**Stainless Steel Back Panels**

Add Suffix "BP" to the model number of any Stern-Williams service sink. Protect wallboard against damage and deterioration. The 12" high panels channel water into the basin, cover the face and lower edges of the wallboard, and protect against worker carelessness. Type 304, 20-gauge stainless steel.



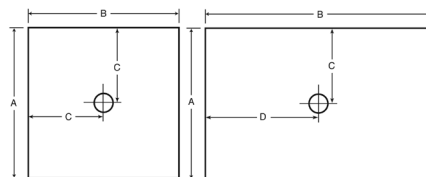
SB-900 Serviceptor Square

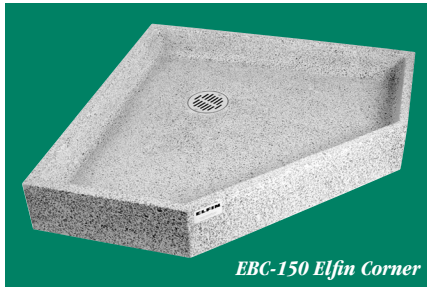


SB-302-L Serviceptor Rectangular

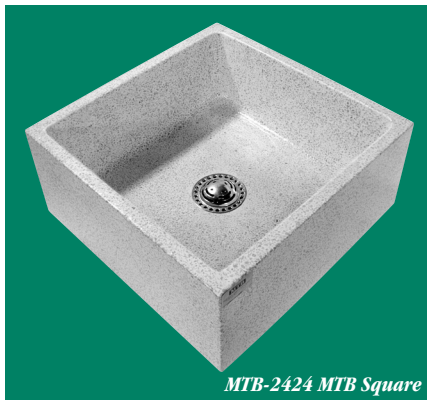


SB-800 Serviceptor w/Plain Shoulders




**EBC-150 Elfin Corner**

**EB-54 Elfin Square**

**EBR-66 Elfin Rectangular**

**MTB-2424 MTB Square**

**MTB-3624 MTB Rectangular**

### ELFIN

The economical Elfin series with 6" high sidewalls is designed for applications that require solid value and low cost. The low profile is both durable and attractive. An optional aluminum cap or vinyl bumper guard is available.

- Terrazzo composed of pearl gray marble chips cast in white Portland cement which produces a compressive strength of 3000 PSI seven days after casting; then ground smooth, grouted and sealed to resist stains and moisture.
- Drain is cast brass with removable stainless steel strainer, cast integral, and provides for a caulked connection of not less than 1" deep to a 3" pipe.
- Installs on the finished floor.

### 6" ELFIN TERRAZZO SERVICE SINKS

#### ELFIN CORNER

MODEL	SIZE	A	B	C	D	E
EBC-150	36x36x6	36	36	12	17	27

#### ELFIN RECTANGULAR

MODEL	SIZE	A	B	C	D	E
EBR-66	36x24x6	24	36	12	18	—
EBR-74	36x32x6	32	36	16	18	—

#### ELFIN SQUARE

MODEL	SIZE	A	B	C	D	E
EB-54	24x24x6	24	24	12	—	—
EB-66	30x30x6	30	30	15	—	—
EB-70	32x32x6	32	32	16	—	—
EB-78	36x36x6	36	36	18	—	—

### MTB

Both economical and serviceable, the MTB Molded Terrazzo Basin with 10" high sidewalls offers consistent high quality and fast, easy installation. Attractive, durable finish gives years of low-cost service and minimum maintenance. For added durability, specify optional aluminum cap or vinyl bumper guard.

### 10" MTB TERRAZZO SERVICE SINKS

#### MTB SQUARE

MODEL	SIZE	A	B	C	D
MTB-2424	24x24x10	24	24	12	—

#### MTB RECTANGULAR

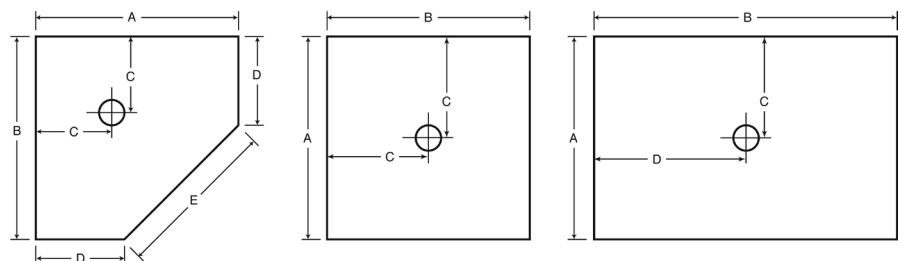
MODEL	SIZE	A	B	C	D
MTB-3624	36x24x10	24	36	12	18



### OPTIONAL CAP OR BUMPER GUARD FOR MTB OR ELFIN BASIN

**A-20** Anodized aluminum cap.

**V-70** Extruded vinyl bumper guard.





## CLINIC SINK BASE

A terrazzo pedestal designed to be used with a vitreous china clinic service sink.

This universal design fits the rough-ins of all major fixture manufacturers.

MODEL	SIZE
1028	28x14x10

## QUALITY ACCESSORIES

### OPTIONAL CAP OR BUMPER GUARD

For on-the-job attachment to the exposed sides.

**A-20** Anodized aluminum cap. (24, 32 or 36")

**V-70** Extruded vinyl bumper guard. (24, 32 or 36")

**T-10-VB** Sink fitting with integral stops, lever handles and spring checks. Spout with bucket hook, 3/4" hose thread end. Vacuum breaker; adjustable top brace. Inlets 8" on centers. Chrome finish.

**T-15-VB** Sink fitting, the same as T-10-VB with Polished Chrome finish.

**T-35** Hose and wall bracket. 36" hose with 3/4" chrome coupling. Type 302 stainless steel bracket with spring loaded rubber grip.

**T-40** Stainless steel mop hanger, #4 finish. 24" length with 3 spring loaded rubber grips.

**C-10** Silaprene Sealant, to close wall seams on receptors without flanges.

## SPEEDI DRAIN CONNECTORS

### Shower Drain Gasket

**TC-2** - For schedule 40 steel pipe, PVC, ABS and C.I. pipe.

## Mop Sink Drain Gaskets

TC-3 -3" For XHCI, plastic and steel pipe.

TC-3-NH -3" For SV and NHCI pipe.

TC-3-2 - 3" Reducer with 2" hole.

Use only with Stern-Williams shower floors and mop sinks.

## SPLASH CATCHER®

### Stainless Steel Back Panels

Add Suffix "BP" to the model number of any Stern-Williams service sink. Protect wallboard against damage and deterioration. The 12" high panels channel water into the basin, cover the face and lower edges of the wallboard, and protect against worker carelessness. Type 304, 20-gauge stainless steel.

Shown: CRS-2200-BP-2-28

**SINGLE PANEL** Specify size\* 24", 28", 32" or 36" \*(i.e., BP-1-24")

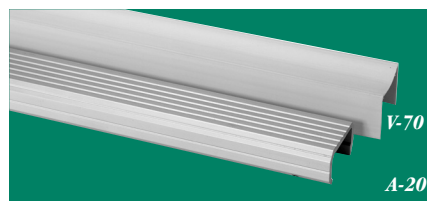
**TWO PANELS, ONE CORNER** Specify size\* 24", 28", 32" or 36" square or 24 x 36" \*(i.e., BP-2-24")

### THREE PANELS, TWO CORNERS

Specify size\* 24", 28", 32" or 36" square or 24 x 36" \*(i.e., BP-3-24")



Model 1028 Clinic Sink



T-15-VB



T-35



T-40



C-10



TC-2



BP-2 Splash Catcher